

# VELOTHON CORPORATE

YOUR COMPANY -  
A WHEEL'S LENGTH AHEAD.

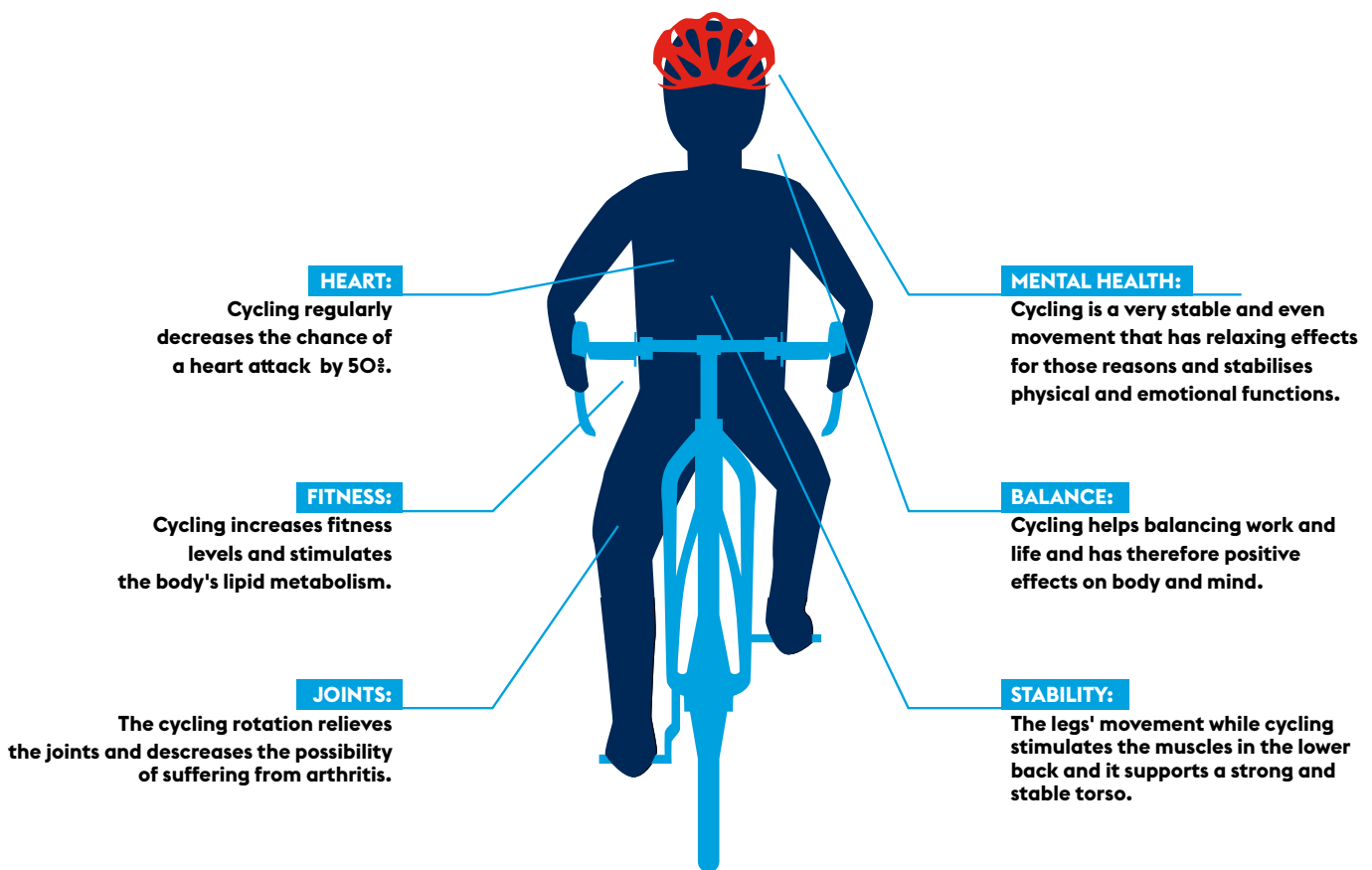


## TEAMBUILDING AND NETWORKING

### BECAUSE CYCLING IS A GROUP ACTIVITY

The VELOTHON Corporate Challenge creates a fun, challenging and sustainable enthusiasm for a healthy, active lifestyle. It is offering each company the perfectly fitting concept to promote sportive activities and build a stronger team by working towards crossing the finish line together.

## YOUR EMPLOYEE ON A BIKE



## BENEFITS FOR COMPANIES

- Easy Registration of the whole team\*
- Choice between all available course distances  
(VELOTHON 60, VELOTHON 120, VELOTHON 180)
- One invoice to pay for all team members
- Every team member manages their own account
- Collective pick-up of all starter information(optional)
- One VELOTHON Corporate pick-up counter at the event
- Team/company name on the starter bibs
- Use the same team name to let all team members start from the same starting block
- The team will be part in the official company ranking
- CORPORATE SPECIAL: get the team's medal engraving for free!

\*VELOTHON Corporate is available for company teams of 10+ people.  
Prices depend on the event your company would like to participate at.





**VELOTHON**

**#THISISCYCLING**

**WWW.VELOTHON.COM**